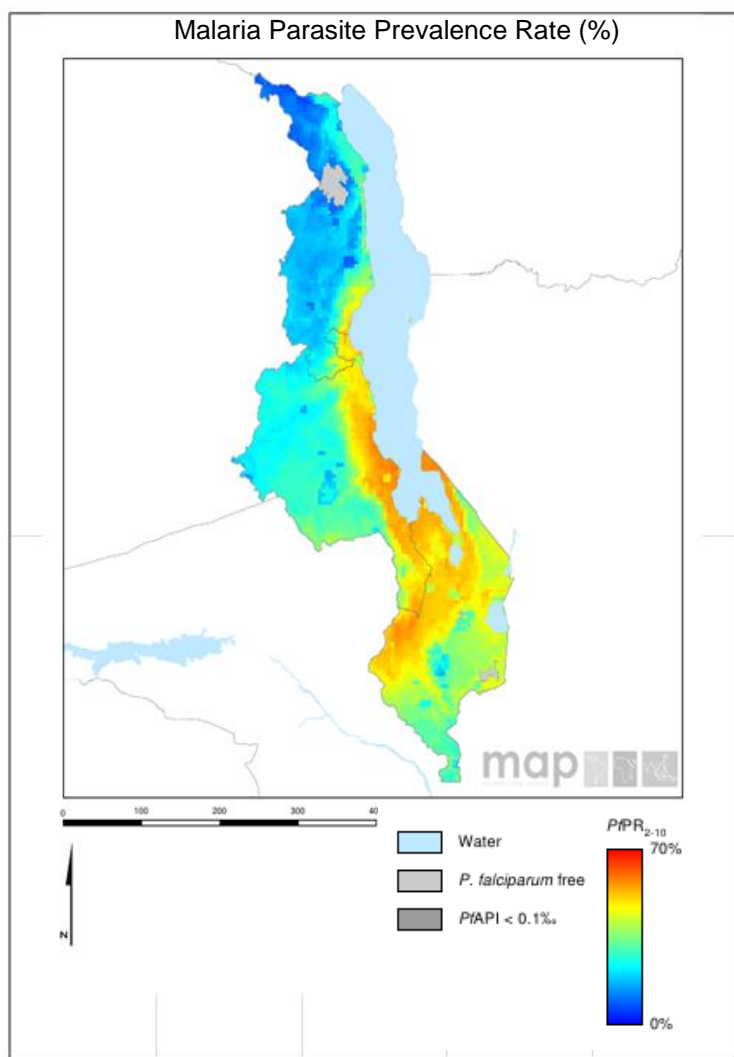


Scorecard for Accountability and Action



Malaria is endemic in all parts of Malawi. The annual reported number of malaria cases in 2013 was 3,906,838 with 3,723 deaths.

Metrics

Policy and Financial Control	
Oral Artemisinin Based Monotherapy Ban status (2015)	Target achieved or on track
Community case management (Pneumonia)(2015)	Target achieved or on track
Community case management (Malaria)(2015)	Target achieved or on track
World Bank rating on public sector mgmt and institutions 2013 (CPIA Cluster D)	3.1
Commodities Financed, Implementation and Malaria Impact	
LLIN financing 2015 projection (% of need)	100
Public sector RDT financing 2015 projection (% of need)	100
Public sector ACT financing 2015 projection (% of need)	100
Operational LLIN/IRS coverage (% of at risk population)	100
On track in 2013 to Reduce Malaria Incidence by >75% by 2015 (vs 2000)	No data/Not applicable
Tracer Indicators for Maternal and Child Health	
PMTCT coverage 2013 (% pregnant HIV pts receiving ARVs)	79
% deliveries assisted by skilled birth attendant	87
Exclusive breastfeeding (% children < 6 months)	70
Vitamin A Coverage 2012 (2 doses)	60
DPT3 coverage 2012 (vaccination among 12-23 month olds)	96
Postnatal care (within 48 hrs)	75

Key

Target achieved or on track
Progress but more effort required
Not on track
No data/Not applicable

Progress

Malawi has made good progress in scaling-up malaria control interventions. The country has made policy changes including the introduction of policies on Community Case Management of malaria and pneumonia. Malawi has also banned oral artemisinin-based monotherapies. The malaria commodities required to achieve and sustain universal coverage in 2015 are financed. High coverage has been obtained for the tracer MNCH interventions, including DPT3 vaccination, skilled birth attendance, exclusive breastfeeding, postnatal care, and PMTCT coverage. Malawi has achieved MDG4 by reducing under-five child mortality by over two-thirds since 1990. Malawi has significantly enhanced the tracking and accountability mechanisms with the development and launch of the Reproductive, Maternal, Newborn and Child Health Scorecard.

Impact

The annual reported number of malaria cases in 2013 was 3,906,838 with 3,723 deaths.

Key Challenge

- Increases in malaria cases reported in 2014.

Previous Key Recommended Action

Objective	Action Item	Suggested completion timeframe	Progress	Comments - key activities/accomplishments since last quarterly report
Address funding	Ensure the GF New Funding Model concept note is submitted by Q4 2014 and ensure that resources are allocated to malaria control at a level that is sufficient to sustain the gains made in recent years	Q4 2014		Malawi submitted the GF New Funding Model concept note in January 2015

New Key Recommended Action

Objective	Action Item	Suggested completion timeframe
Optimise quality of care	Investigate reasons for the increasing number of malaria cases in 2014	Q4 2015

Key

	Action achieved
	Some progress
	No progress
	Deliverable not yet due