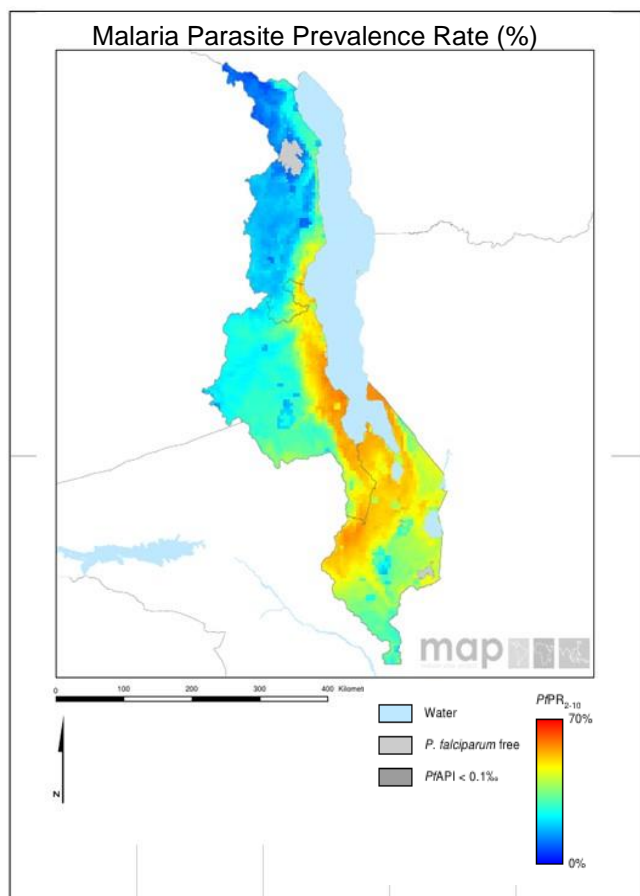


Scorecard for Accountability and Action



Malaria is endemic in all parts of Malawi. The annual reported number of malaria cases in 2017 was 5,936,348 with 3,613 deaths.

Metrics

| Commodities Financed and Financial Control | |
|---|-----|
| LLIN financing 2019 projection (% of need) | 100 |
| Public sector RDT financing 2019 projection (% of need) | 100 |
| Public sector ACT financing 2019 projection (% of need) | 100 |
| World Bank rating on public sector management and institutions 2017 (CPIA Cluster D) | 3.2 |
| Insecticide Resistance Monitoring, Implementation and Impact | |
| Insecticide classes with mosquito resistance in representative sentinel sites confirmed since 2010 | 4 |
| Insecticide resistance monitored since 2015 and data reported to WHO | |
| National Insecticide Resistance Monitoring and Management Plan | |
| Scale of Implementation of iCCM (2017) | |
| Operational LLIN/IRS coverage (% of at risk population) | 100 |
| Change in Estimated Malaria Incidence(2010–2017) | |
| Change in Estimated Malaria Mortality rate(2010–2017) | |
| Tracer Indicators for Maternal and Child Health and NTDs | |
| Mass Treatment Coverage for Neglected Tropical Disease (NTD index, %)(2017) | 91 |
| Estimated % of Total Population living with HIV who have access to antiretroviral therapy (2018) | 78 |
| Estimated % of children (0–14 years old) living with HIV who have access to antiretroviral therapy (2018) | 61 |
| % deliveries assisted by skilled birth attendant | 90 |
| Postnatal care (within 48 hrs) | 42 |
| Exclusive breastfeeding (% children < 6 months) | 59 |
| Vitamin A Coverage 2017 (2 doses) | 91 |
| DPT3 coverage 2017 (vaccination among 0-11 month olds) | 88 |

Key

| | |
|--|-----------------------------------|
| | Target achieved or on track |
| | Progress but more effort required |
| | Not on track |
| | No data |
| | Not applicable |

Malaria

Progress

Malawi has secured sufficient resources to finance the ACTs, RDTs and LLINs required for 2019. Sufficient LLINs have been procured to achieve 100% operational coverage of LLINs. Malawi has scaled up iCCM. Malawi has carried out insecticide resistance monitoring since 2015 and has reported the results to WHO. The country has also developed an insecticide resistance monitoring and management plan. Malawi has significantly enhanced the tracking and accountability mechanisms for malaria with the development of the Malaria Control Scorecard.

Impact

The annual reported number of malaria cases in 2017 was 5,936,348 with 3,613 deaths.

Key Challenge

- The country has been adversely affected by the recent cyclone Idai.

Previous Key Recommended Action

| Objective | Action Item | Suggested completion timeframe | Progress | Comments - key activities/accomplishments since last quarterly report |
|-----------|--|--------------------------------|----------|--|
| Impact | Work to ensure that the recent cyclone does not impact negatively on the malaria situation | Q4 2019 | | The country immediately deployed additional commodities to the cyclone affected areas and no upsurges have been reported |

RMNCAH and NTDs

Progress

High coverage has been obtained for the tracer RMNCAH interventions, skilled birth attendants, exclusive breastfeeding and vitamin A. the country has recently increased coverage of ARTs in the total population. Malawi has significantly enhanced the tracking and accountability mechanisms with the development and launch of the Reproductive, Maternal, Newborn and Child Health Scorecard.

Progress in addressing Neglected Tropical Diseases (NTDs) in Malawi is measured using a composite index calculated from preventive chemotherapy coverage achieved for lymphatic filariasis, onchocerciasis, schistosomiasis, soil transmitted helminths and trachoma. Preventive chemotherapy coverage in Malawi is high for lymphatic filariasis (100%), schistosomiasis (100%), trachoma (90%), onchocerciasis (86%) and soil transmitted helminths (82%). Overall, the NTD preventive chemotherapy coverage index for Malawi in 2017 is 91, which represents a slight increase compared with the 2016 index value (89). Malawi has significantly enhanced the tracking and accountability mechanisms with the development and launch of the NTD Scorecard.