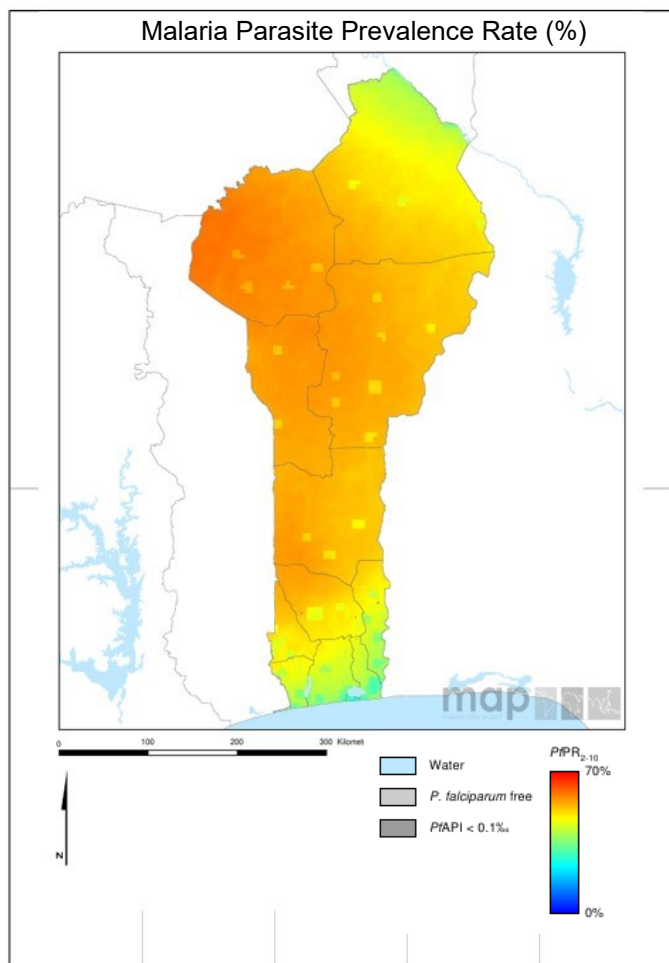


### Scorecard for Accountability and Action



Malaria is endemic throughout Benin. The annual reported number of malaria cases in 2016 was 1,374,729 with 1,646 deaths.

#### Metrics

Commodities Financed and Financial Control		
LLIN financing 2017 projection (% of need)	99	Target achieved or on track
Public sector RDT financing 2017 projection (% of need)	100	Target achieved or on track
Public sector ACT financing 2017 projection (% of need)	100	Target achieved or on track
World Bank rating on public sector management and institutions 2016 (CPIA Cluster D)	3.3	Progress but more effort required
Insecticide Resistance Monitoring, Implementation and Impact		
Insecticide classes with mosquito resistance in representative sentinel sites confirmed since 2010	4	Not on track
Insecticide resistance monitored since 2015 and data reported to WHO		Target achieved or on track
National Insecticide Resistance Monitoring and Management Plan		Progress but more effort required
Scale of Implementation of iCCM (2016)		Target achieved or on track
Operational LLIN/IRS coverage (% of at risk population)	100	Target achieved or on track
Change in malaria incidence rate (2010–2016)		No data
Tracer Indicators for Maternal and Child Health and NTDs		
Mass Treatment Coverage for Neglected Tropical Disease (NTD index, %)(2016)	58	Progress but more effort required
Estimated % of Total Population living with HIV who have access to antiretroviral therapy (2016)	57	Progress but more effort required
Estimated % of children (0–14 years old) living with HIV who have access to antiretroviral therapy (2016)	31	Not on track
% deliveries assisted by skilled birth attendant	77	Target achieved or on track
Postnatal care (within 48 hrs)	78	Target achieved or on track
Exclusive breastfeeding (% children < 6 months)	41	Progress but more effort required
Vitamin A Coverage 2015 (2 doses)	95	Target achieved or on track
DPT3 coverage 2016 (vaccination among 0-11 month olds)	63	Progress but more effort required

#### Key

Target achieved or on track
Progress but more effort required
Not on track
No data
Not applicable

## Malaria

### Progress

Benin has procured sufficient LLINs to achieve universal operational coverage of vector control. The country has successfully raised resources for the financing of the required number of LLINs, RDTs, and ACTs in 2017. Benin has scaled up implementation of iCCM. The country has carried out insecticide resistance monitoring since 2015 and has reported the results to WHO.

### Impact

The annual reported number of malaria cases in 2016 was 1,374,729 with 1,646 deaths.

### Key Challenge

- Insecticide resistance threatens vector control effectiveness.

## MNCH and NTDs

### Progress

Benin has made good progress on tracer MNCH interventions, in particular skilled birth attendants, vitamin A and postnatal care.





Progress in addressing Neglected Tropical Diseases (NTDs) in Benin is measured using a composite index calculated from preventive chemotherapy coverage achieved for lymphatic filariasis, onchocerciasis, schistosomiasis, soil transmitted helminths and trachoma. Preventive chemotherapy coverage for soil transmitted helminths in Benin is high (96%). In addition, coverage is 56% for lymphatic filariasis, 57% for onchocerciasis, 59% for schistosomiasis and 39% for trachoma. Overall, the NTD preventive chemotherapy coverage index for Benin in 2016 is 58 and shows substantial improvement over the 2015 index value (18).

### Previous Key Recommended Actions

Objective	Action Item	Suggested completion timeframe	Progress	Comments - key activities/accomplishments since last quarterly report
MNCH <sup>1</sup> : Optimise quality of care	Identify and address reasons for the decrease in coverage of DPT3	Q2 2018		Deliverable not yet due

Benin has responded positively to the MNCH recommended action addressing the low coverage of ARTs in children and continues to track progress as this action is implemented.

### Key

	Action achieved
	Some progress
	No progress
	Deliverable not yet due

<sup>1</sup> MNCH metrics, recommended actions and response tracked through WHO MCA