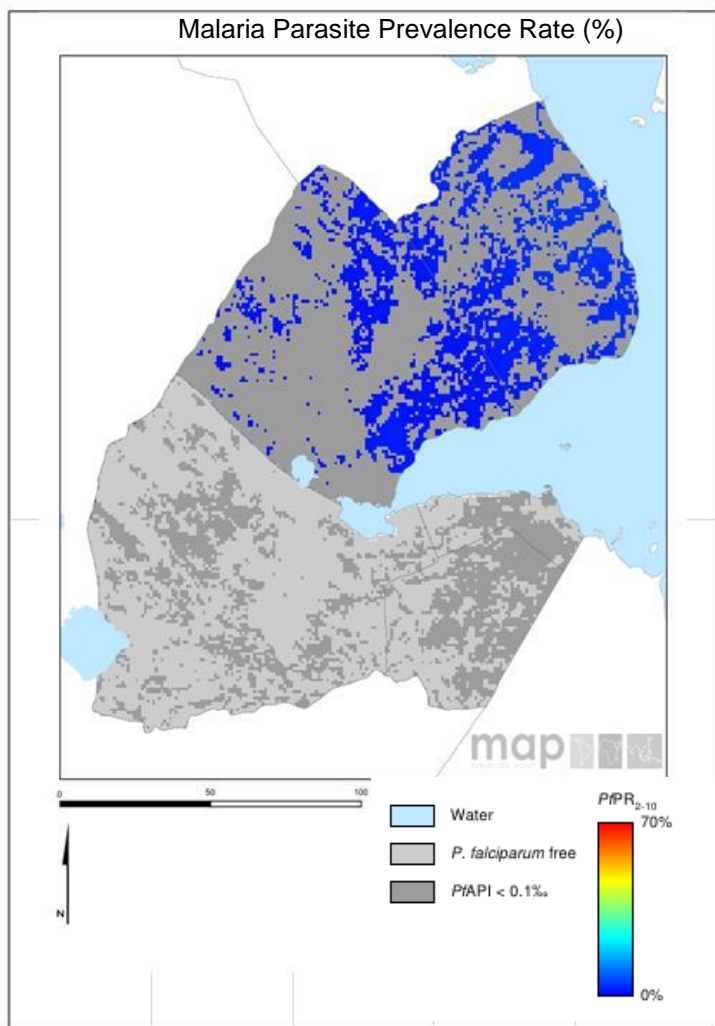


Scorecard for Accountability and Action



Metrics

Policy and Financial Control	
Oral Artemisinin Based Monotherapy Ban status (2014)	Target achieved or on track
Community case management (Pneumonia)(2014)	Not on track
Community case management (Malaria)(2014)	Not on track
World Bank rating on public sector mgmt and institutions 2013 (CPIA Cluster D)	2.7
Commodities Financed, Implementation and Malaria Impact	
LLIN financing 2014 projection (% of need)	32
Public sector RDT financing 2014 projection (% of need)	71
Public sector ACT financing 2014 projection (% of need)	60
Operational LLIN/IRS coverage (% of at risk population)	21
On track in 2013 to Reduce Malaria Incidence by >75% by 2015 (vs 2000)	No data/Not applicable
Tracer Indicators for Maternal and Child Health	
PMTCT coverage 2013 (% pregnant HIV pts receiving ARVs)	36
% deliveries assisted by skilled birth attendant	93
Exclusive breastfeeding (% children < 6 months)	1
Vitamin A Coverage 2012 (2 doses)	88
DPT3 coverage 2012 (vaccination among 12-23 month olds)	81
Postnatal care (within 48 hrs)	No data/Not applicable

Nearly 50% of the population of Djibouti is at low risk of malaria, while the remaining in the desert is free of malaria. The annual reported number of malaria cases in 2013 was 1,684 and 17 deaths

Key

Target achieved or on track
Progress but more effort required
Not on track
No data/Not applicable

Progress

Djibouti has banned the use of oral artemisinin-based monotherapies. Good progress has been made on tracer MNCH interventions, including skilled birth attendants, DPT3 coverage, and vitamin A coverage.

Impact

The annual reported number of malaria cases in 2013 was 1,684 with 17 deaths. The number of malaria cases and deaths increased from 25 cases and zero deaths reported in 2012.

Key Challenge

- Significant delays in the implementation of the Global Fund malaria grant leading to serious delays in programme implementation.

Previous Key Recommended Actions

Objective	Action Item	Suggested completion timeframe	Progress	Comments - key activities/accomplishments since last quarterly report
Address funding	Assess the implications of the lack of new malaria funding through the Global Fund and work to ensure that resources are allocated to malaria control at a level that is sufficient to sustain the gains made in recent years	Q3 2014		The GF New Funding Model concept note was submitted in October 2014
Optimise quality of care	Address falling LLIN coverage	Q2 2014		LLINs needed to achieve high coverage will be partly funded under the Global Fund NFM concept note submitted in October 2014
MNCH ¹ : Optimise quality of care	a) Prioritise collection of postnatal care data	Q1 2014		Djibouti has enhanced efforts to improve coverage of postnatal care by improving communication with and sensitisation of community and religious leaders. The MICS/DHS planned for the end of 2015 will provide updated postnatal care coverage data
	b) Identify and address reasons for decreasing DPT3 coverage	Q2 2015		Deliverable not yet due

¹ MNCH metrics, recommended actions and response tracked through WHO MCA/iERG

Objective	Action Item	Suggested completion timeframe	Progress	Comments - key activities/accomplishments since last quarterly report
MNCH ¹ : Optimise quality of care	c) Ensure all facilities are baby friendly by implementing the ten steps to successful breastfeeding, providing follow-up support to breastfeeding mothers and enhancing community awareness	Q1 2013		The MNCH plan prioritises breastfeeding promotion. Djibouti has identified key practices hampering exclusive breastfeeding and is working to address them. WHO, UNICEF, and WFP are supporting the MoH to accelerate and scale up nutrition programming including the development of an action plan with enhanced advocacy and support to breastfeeding. World Bank performance based financing aims to enhance breastfeeding and under a pilot project for nutrition and food security, a toolkit for informing mothers on breastfeeding has been developed and there are plans to expand its use and train health staff. There has been enhanced communication in support of breastfeeding on both radio and television

Key

	Action achieved
	Some progress
	No progress
	Deliverable not yet due

¹ MNCH metrics, recommended actions and response tracked through WHO MCA/iERG