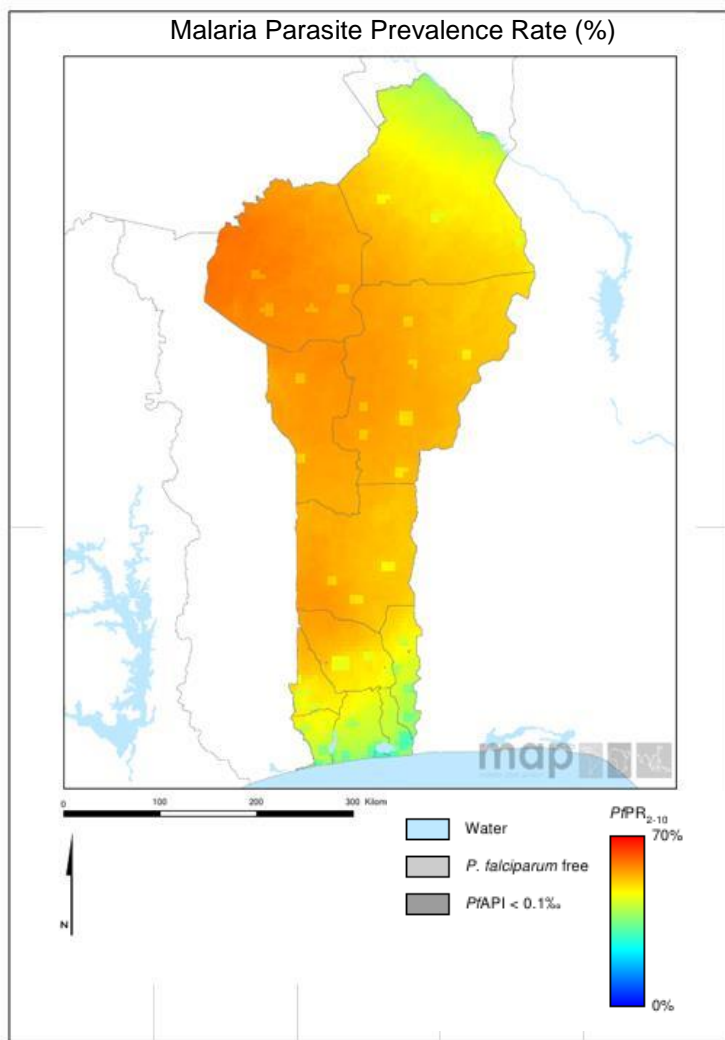


Scorecard for Accountability and Action



Malaria is endemic throughout Benin; however, transmission is more intense in the southern third of the country. The annual reported number of malaria cases in 2012 was 1,151,038 with 2,261 deaths.

Metrics

Policy and Financial Control	
Oral Artemisinin Based Monotherapy Ban status (2014)	Target achieved or on track
Community case management (Pneumonia)	Target achieved or on track
Community case management (Malaria)	Target achieved or on track
World Bank rating on public sector mgmt and institutions 2013 (CPIA Cluster D)	3.3
Commodities Financed, Implementation and Malaria Impact	
LLIN financing 2014 projection (% of need)	94
Public sector RDT financing 2014 projection (% of need)	100
Public sector ACT financing 2014 projection (% of need)	100
Operational LLIN/IRS coverage (% of at risk population)	▲ 100
On track in 2012 to Reduce Malaria Incidence by >75% by 2015 (vs 2000)	No data/Not applicable
Tracer Indicators for Maternal and Child Health	
PMTCT coverage 2013 (% pregnant HIV pts receiving ARVs)	▲ 45
% deliveries assisted by skilled birth attendant	84
Exclusive breastfeeding (% children < 6 months)	33
Vitamin A Coverage 2012 (2 doses)	99
DPT3 coverage 2012 (vaccination among 12-23 month olds)	85
Postnatal care (within 48 hrs)	49

Key

Target achieved or on track
Progress but more effort required
Not on track
No data/Not applicable

### Progress

Benin has made significant progress in malaria control policy, including banning the importation and sale of oral artemisinin-based monotherapies. Benin has introduced Community Case Management of malaria and pneumonia. The country has sufficient finances available to cover the 2014 requirements for LLINs, ACTs, and RDTs and has procured sufficient LLINs to achieve universal coverage. The country has also made good progress on tracer MNCH interventions, in particular increasing skilled birth attendants, vitamin A, and DPT3 vaccination coverage and has recently increased PMTCT coverage.

### Impact

The annual reported number of malaria cases in 2012 was 1,151,038 with 2,261 deaths.





### Key Challenge

- Securing longer-term finances for malaria control.

### Previous Key Recommended Actions

Objective	Action Item	Suggested completion timeframe	Progress	Comments - key activities/accomplishments since last quarterly report
Address funding	Ensure the NFM concept note is submitted by Q1 2015 and ensure that resources are allocated to malaria control at a level that is sufficient to sustain the gains made in recent years	Q1 2015		Deliverable not yet due
Optimise quality of care	Address reasons for decreasing LLIN coverage	Q4 2014		Over 5 million LLINs delivered to Benin in the last quarter

### Key

	Action achieved
	Some progress
	No progress
	Deliverable not yet due