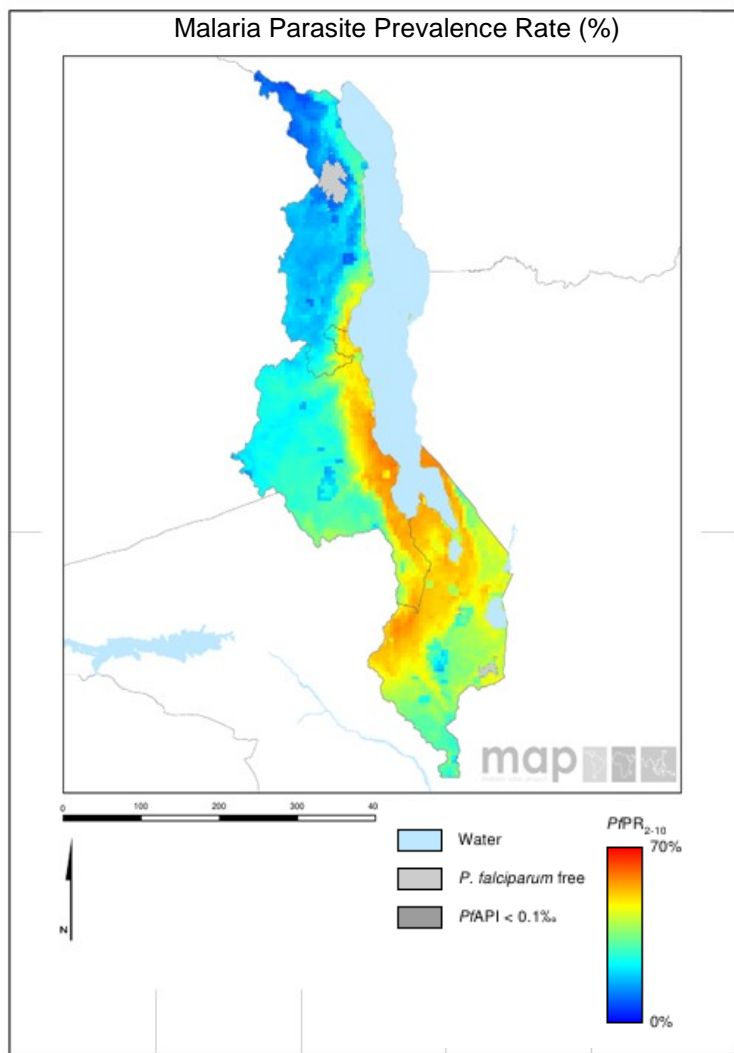


Scorecard for Accountability and Action



Malaria is endemic in all parts of Malawi. The annual reported number of malaria cases in 2013 was 3,906,838 with 3,723 deaths.

Metrics

| Policy and Financial Control   |                             |
|--|-----------------------------|
| Oral Artemisinin Based Monotherapy Ban status (2015)                           | Target achieved or on track |
| Community case management (Pneumonia)(2015)                                    | Target achieved or on track |
| Community case management (Malaria)(2015)                                      | Target achieved or on track |
| World Bank rating on public sector mgmt and institutions 2013 (CPIA Cluster D) | 3.1                         |
| Commodities Financed, Implementation and Malaria Impact                        |                             |
| LLIN financing 2015 projection (% of need)                                     | 100                         |
| Public sector RDT financing 2015 projection (% of need)                        | 100                         |
| Public sector ACT financing 2015 projection (% of need)                        | 100                         |
| Operational LLIN/IRS coverage (% of at risk population)                        | 100                         |
| On track in 2013 to Reduce Malaria Incidence by >75% by 2015 (vs 2000)         | No data/Not applicable      |
| Tracer Indicators for Maternal and Child Health                                |                             |
| PMTCT coverage 2013 (% pregnant HIV pts receiving ARVs)                        | 79                          |
| % deliveries assisted by skilled birth attendant                               | 87                          |
| Exclusive breastfeeding (% children < 6 months)                                | 70                          |
| Vitamin A Coverage 2012 (2 doses)  | 60                          |
| DPT3 coverage 2013 (vaccination among 12-23 month olds)                        | 89                          |
| Postnatal care (within 48 hrs)   | 75                          |

Key

|                                   |
|-----------------------------------|
| Target achieved or on track       |
| Progress but more effort required |
| Not on track                      |
| No data/Not applicable            |

### Progress

Malawi has made good progress in scaling-up malaria control interventions. The country has made policy changes including the introduction of policies on Community Case Management of malaria and pneumonia. Malawi has also banned oral artemisinin-based monotherapies. The malaria commodities required to achieve and sustain universal coverage in 2015 are financed. High coverage has been obtained for the tracer MNCH interventions, including skilled birth attendance, exclusive breastfeeding, postnatal care, and PMTCT coverage. Malawi has achieved MDG4 by reducing under-five child mortality by over two-thirds since 1990. Malawi has significantly enhanced the tracking and accountability mechanisms with the development and launch of the Reproductive, Maternal, Newborn and Child Health Scorecard.

### Impact

The annual reported number of malaria cases in 2013 was 3,906,838 with 3,723 deaths.

### Key Challenge

- Increases in malaria cases reported in 2014.

### Previous Key Recommended Action

| Objective                | Action Item  | Suggested completion timeframe | Progress | Comments - key activities/accomplishments since last quarterly report  |
|--------------------------|--|--------------------------------|----------|--|
| Optimise quality of care | Investigate reasons for the increasing number of malaria cases in 2014 | Q4 2015                        |          | Increased reporting including through iCCM is thought to have contributed to the reported increase in cases in 2014 but further investigations are ongoing |

### New Key Recommended Action

| Objective                                       | Action Item   | Suggested completion timeframe |
|---|---|--------------------------------|
| MNCH <sup>1</sup> :<br>Optimise quality of care | Identify and address reasons for decreasing DPT3 coverage | Q2 2016                        |

### Key

|  |                         |
|--|-------------------------|
|  | Action achieved         |
|  | Some progress           |
|  | No progress             |
|  | Deliverable not yet due |

<sup>1</sup> MNCH metrics, recommended actions and response tracked through WHO MCA/iERG