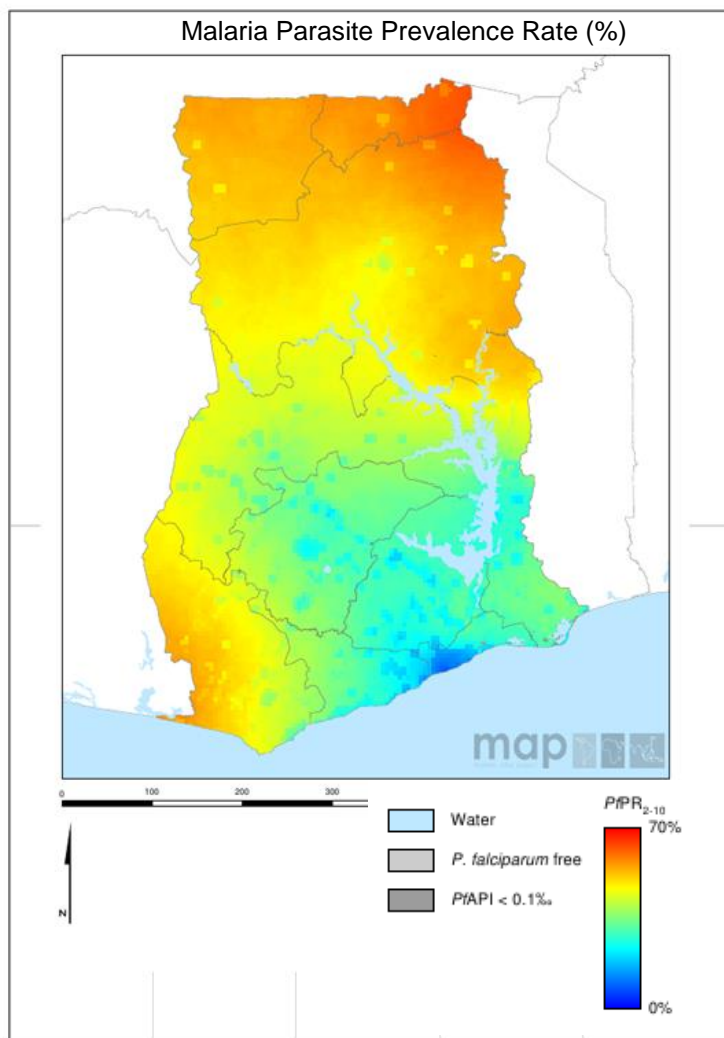


### Scorecard for Accountability and Action



The entire population of Ghana is at risk of malaria. The annual reported number of malaria cases in 2012 was 8,774,516 with 2,855 deaths.

#### Metrics

Policy and Financial Control		
Oral Artemisinin Based Monotherapy Ban status (2014)		
Community case management (Pneumonia)		
Community case management (Malaria)		
World Bank rating on public sector mgmt and institutions 2013 (CPIA Cluster D)		3.7
Commodities Financed, Implementation and Malaria Impact		
LLIN financing 2014 projection (% of need)		62
Public sector RDT financing 2014 projection (% of need)		81
Public sector ACT financing 2014 projection (% of need)		94
Operational LLIN/IRS coverage (% of at risk population)	▲	99
On track in 2012 to Reduce Malaria Incidence by >75% by 2015 (vs 2000)		
Tracer Indicators for Maternal and Child Health		
PMTCT coverage 2012 (% pregnant HIV pts receiving ARVs)		95
% deliveries assisted by skilled birth attendant		68
Exclusive breastfeeding (% children < 6 months)		46
Vitamin A Coverage 2012 (2 doses)	▼	17
DPT3 coverage 2012 (vaccination among 12-23 month olds)		92
Postnatal care (within 48 hrs)		83

#### Key

<span style="background-color: #90EE90; border: 1px solid black; display: inline-block; width: 15px; height: 10px;"></span>	Target achieved or on track
<span style="background-color: #FFFF00; border: 1px solid black; display: inline-block; width: 15px; height: 10px;"></span>	Progress but more effort required
<span style="background-color: #FF0000; border: 1px solid black; display: inline-block; width: 15px; height: 10px;"></span>	Not on track
<span style="background-color: #808080; border: 1px solid black; display: inline-block; width: 15px; height: 10px;"></span>	No data/Not applicable

### Progress

Ghana has banned the import and sale of oral artemisinin-based monotherapies and has introduced policies of Community Case Management of malaria and pneumonia. Ghana secured sufficient resources for most of the antimalarial commodities required to sustain coverage in 2014. The country has achieved high coverage of tracer MNCH interventions, in particular PMTCT, DPT3 vaccination and postnatal care.

### Impact

The annual reported number of malaria cases in 2012 was 8,774,516 with 2,855 deaths.

### Key Challenge

- The lack of significant new resources allocated to malaria in the Global Fund New Funding Model jeopardises the country's ability to sustain the impressive gains made in the fight against malaria.

### Previous Key Recommended Actions





Objective	Action Item	Suggested completion timeframe	Progress	Comments - key activities/accomplishments since last quarterly report
Optimise quality of care	Address falling LLIN coverage	Q3 2014		1.8 million LLINs were delivered in the last quarter
Address funding	Ensure the NFM concept note is submitted by Q4 2014 and ensure that resources are allocated to malaria control at a level that is sufficient to sustain the gains made in recent years. This may require reprogramming of existing resources	Q4 2014		Deliverable not yet due but country has begun the preparation of the GF NFM concept note
MNCH <sup>1</sup> : Optimise quality of care	Address reasons for decreasing breastfeeding coverage	Q3 2014		The country has introduced legislation extending maternity leave to 6 months to allow for exclusive breastfeeding

### New Key Recommended Action

Objective	Action Item	Suggested completion timeframe
MNCH <sup>1</sup> : Optimise quality of care	Identify and address reasons for decreasing vitamin A coverage	Q2 2015

<sup>1</sup> MNCH metrics, recommended actions and response tracked through WHO MCA/iERG

## Key

	Action achieved
	Some progress
	No progress
	Deliverable not yet due